



MCY

MONTECARLOYACHTS

Specifications

Construction

Builder:	Monte Carlo Yachts
Model:	MCY 86
Year:	2016
Hull material:	GRP
Location:	Turkey

Performance and Engines

Max speed:	29 kn
Cruise speed:	24 kn
Engines:	2 x MAN V12 1800 hp
Generator:	2 x Kohler gen. 32kW

Dimensions and Capacities

Length:	26.30 m - 86 ft
Beam:	6.55 m - 21 ft 2 in
Draft:	1.90 m - 6 ft 3 in
Displacement:	72 t Dry
Fuel tank:	2 x 7,100 liters
Water tank:	2 x 1500 liters

Accommodation

Guest cabin:	4
Number of guest:	8
Crew cabin:	2
Number of crew:	3

Key features

- The same owner since launched
- Low engine hours
- Fully crewed & Well maintained
- Best Motoryacht 80-89 ft 2014 Editor's Choice Awards Winner Fort Lauderdale International Boat Show
- Best Worldwide Production Motor Yacht 25 meters and above Asia Boating Award 2014





MCY

MONTECARLOYACHTS



MCY

MONTECARLOYACHTS



MCY

MONTECARLOYACHTS



MCY

MONTECARLOYACHTS



MCY

MONTECARLOYACHTS



MCY

MONTECARLOYACHTS



MCY

MONTECARLOYACHTS



MCY

MONTECARLOYACHTS



MCY

MONTECARLOYACHTS



MCY

MONTECARLOYACHTS



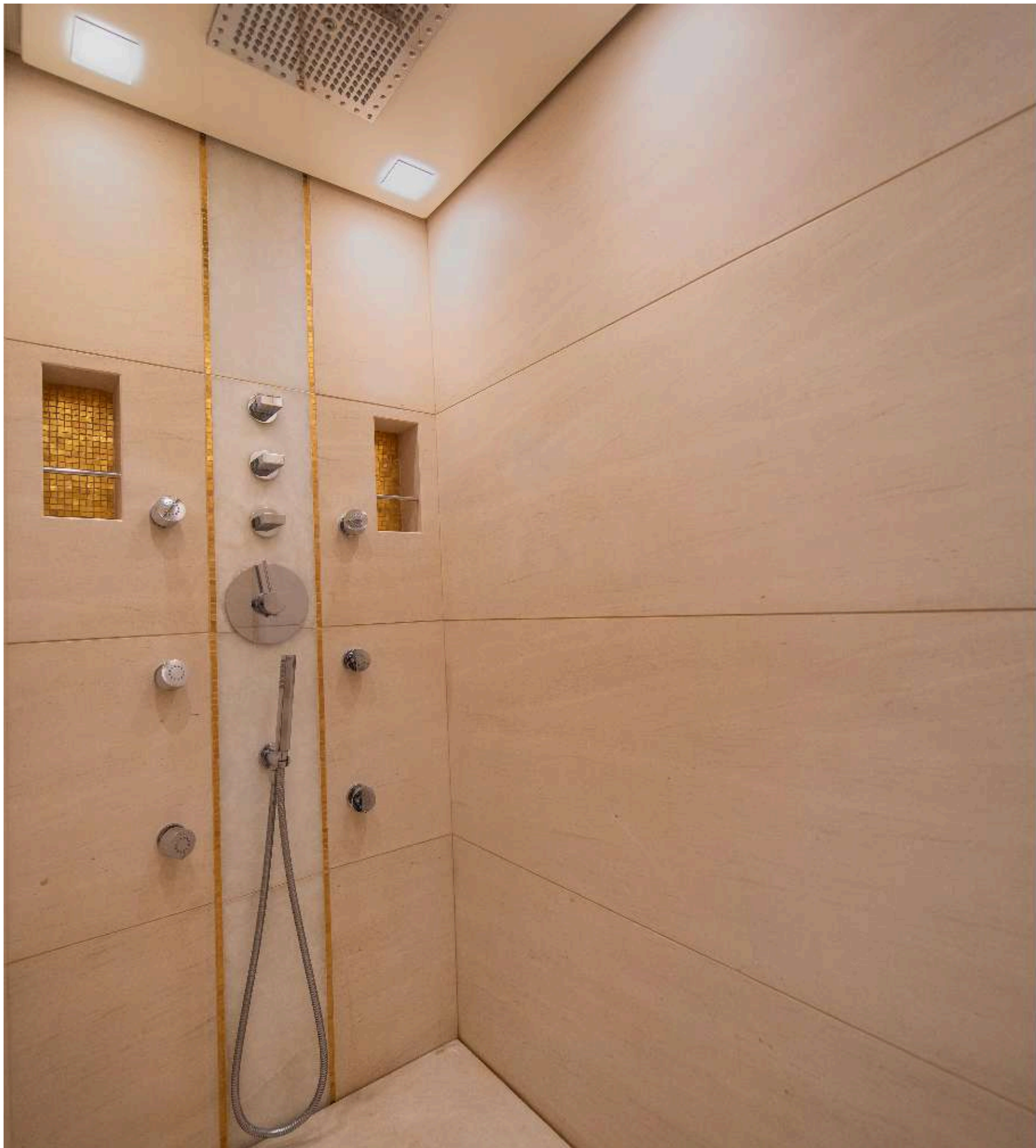
MCY

MONTECARLOYACHTS



MCY

MONTECARLOYACHTS



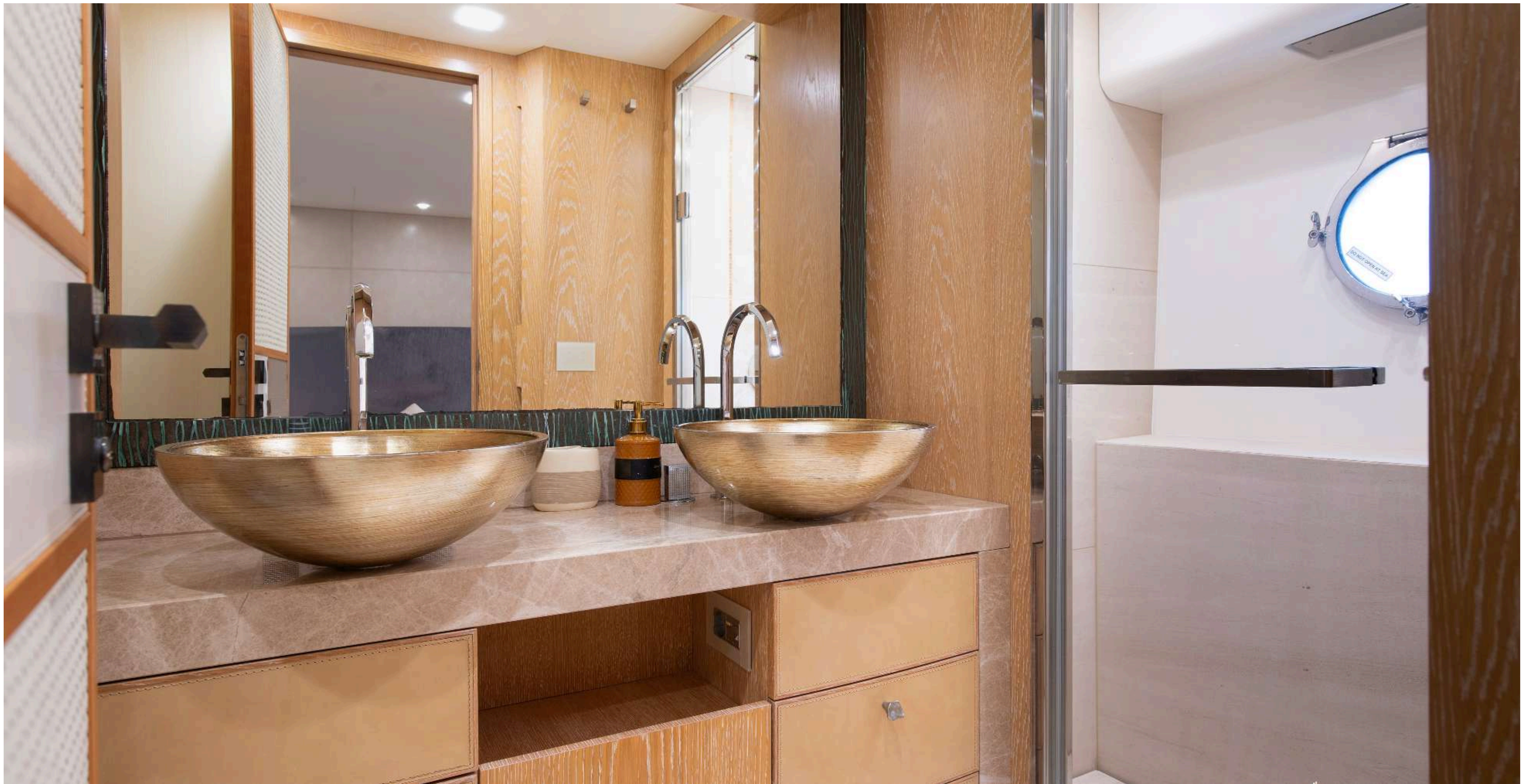
MCY

MONTECARLOYACHTS



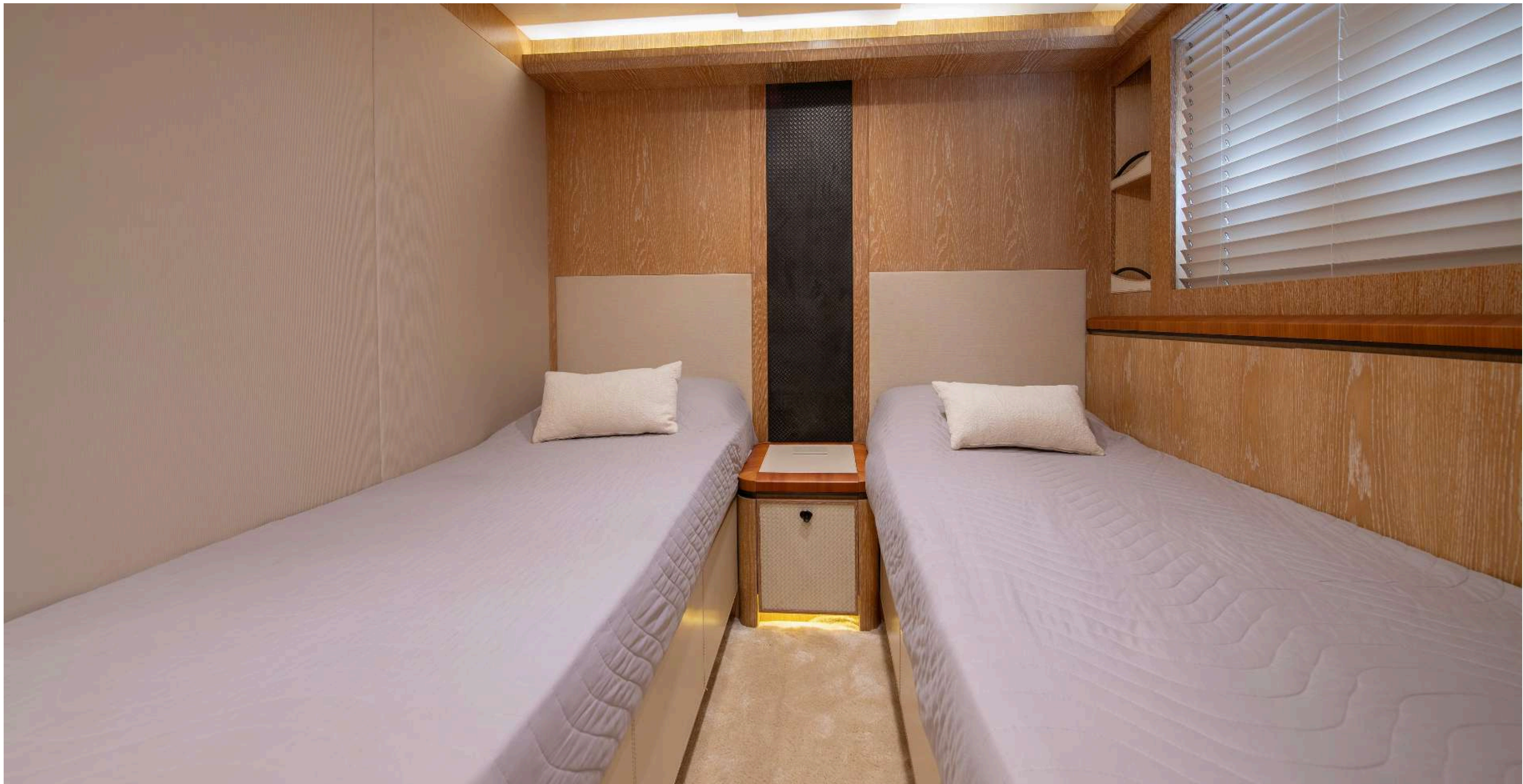
MCY

MONTECARLOYACHTS



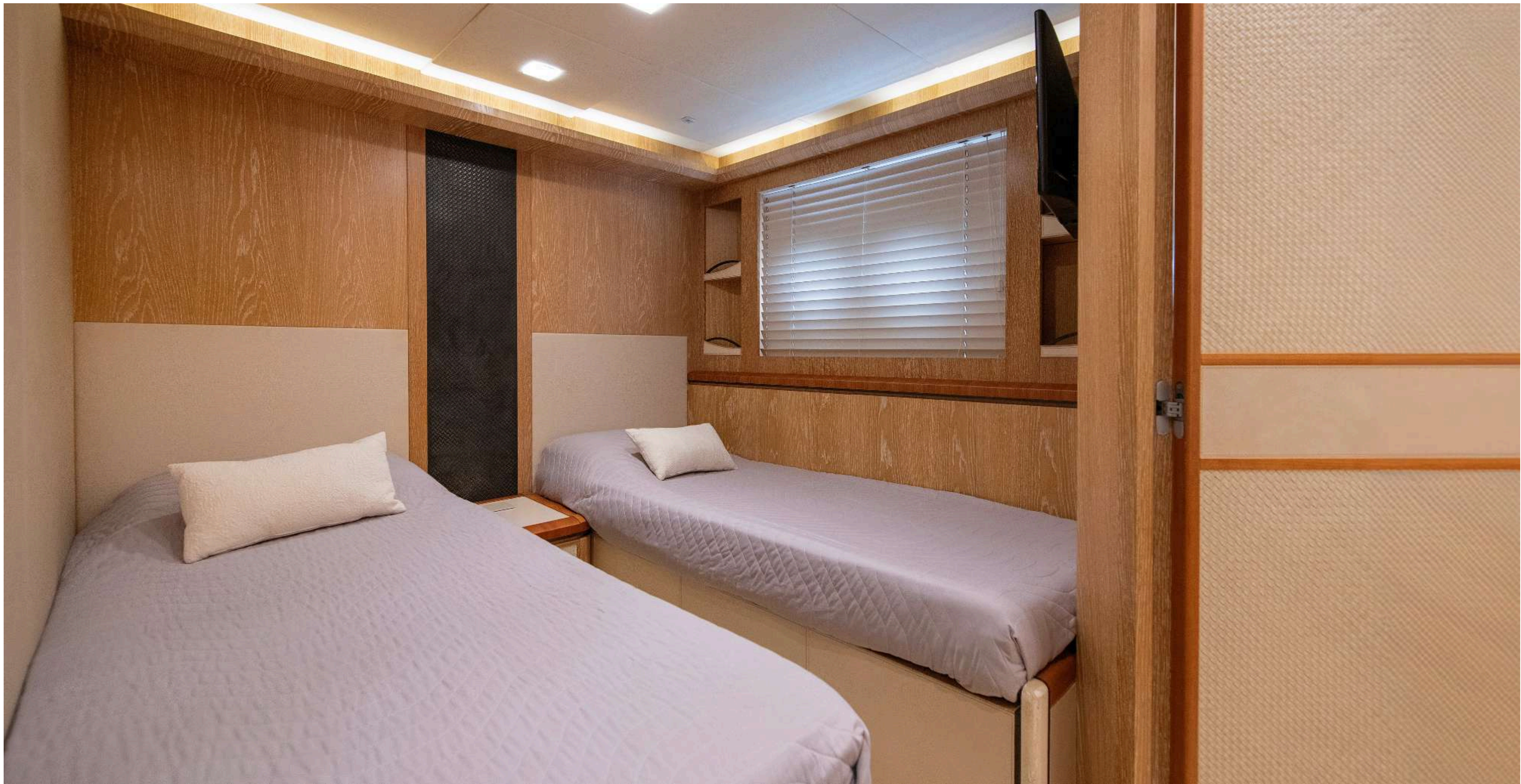
MCY

MONTECARLOYACHTS



MCY

MONTECARLOYACHTS



MCY

MONTECARLOYACHTS



MCY

MONTECARLOYACHTS

LEGAL DISCLAIMER

These particulars have been prepared from information provided and obtained from sources believed to be correct but are not guaranteed. This information is intended as a general guide to the vessel. We cannot, however, be liable for any inaccuracy. It is up to the purchaser to confirm details of concern to him by survey, inspection and enquiry of the seller and to ensure that the purchase contract properly reflects one's concern and specific details upon which one may rely. All information in this document is provided in good faith but not binding for legal reasons.

