





# Specifications

---

## Construction

Builder:	Absolute
Model:	40 STY
Year:	2013
Hull material:	GRP
Location:	Turkey

## Performance and Engines

Max speed:	29kn
Cruise speed:	22kn
Engines:	2×D6-IPS500
Generator:	1 x Mesa 7 KW

## Dimensions and Capacities

Lenght:	12.05 m
Beam:	4.05 m
Draft:	1.10 m
Fuel tank:	900 lt
Water tank:	280 lt

## Accomodation

Guest cabin:	2
Number of guest:	4

## Key features

- Volvo Penta IPS Dynamic Positioning System
- Hydraulic swimming platform
- Retractable glass saloon roof
- Wide opening door accessing the upper deck
- Large windows provide light to the interior
- Air conditioner
- Water maker

























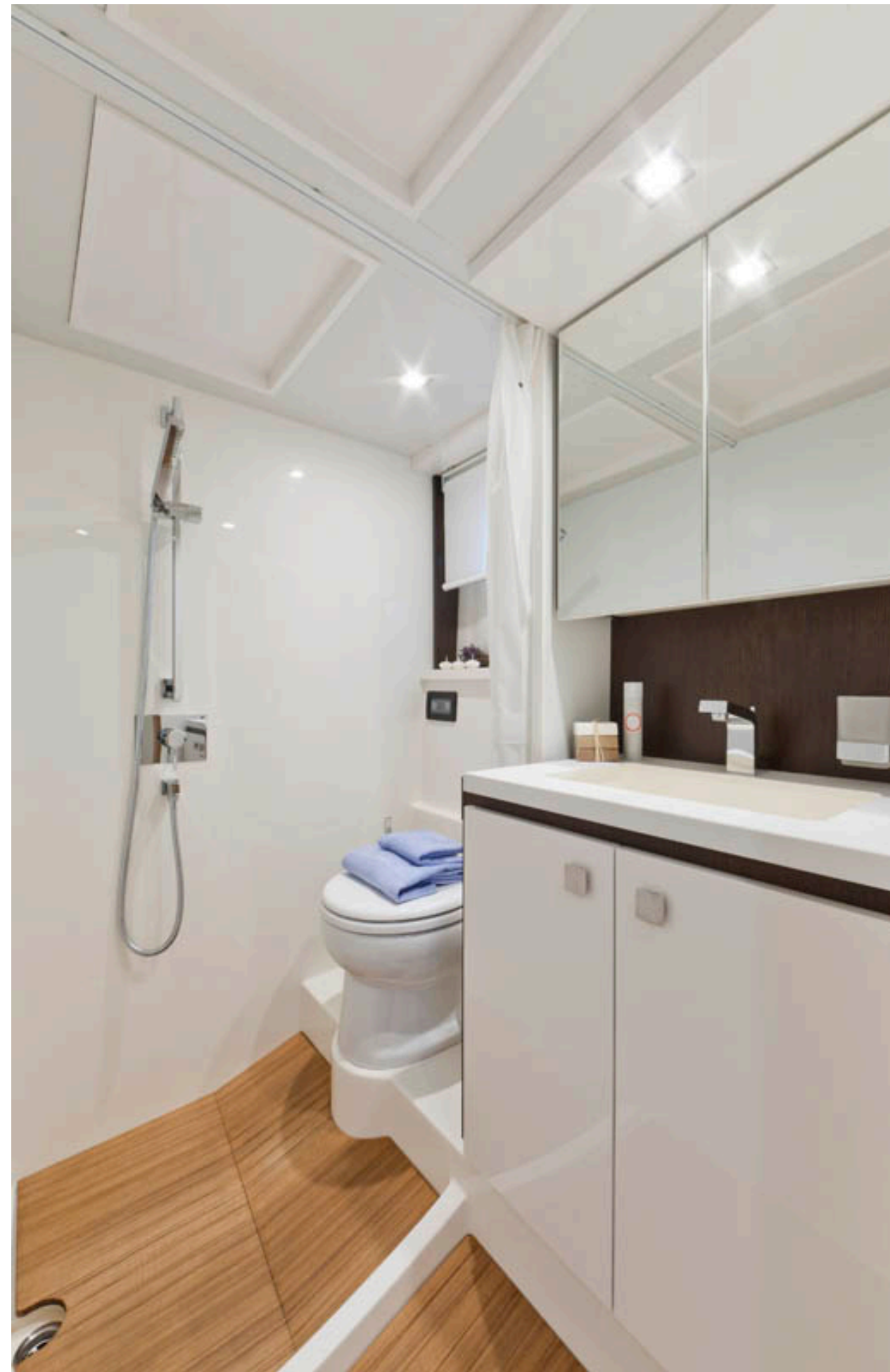






























# LEGAL DISCLAIMER

These particulars have been prepared from information provided and obtained from sources believed to be correct but are not guaranteed. This information is intended as a general guide to the vessel. We cannot, however, be liable for any inaccuracy. It is up to the purchaser to confirm details of concern to him by survey, inspection and enquiry of the seller and to ensure that the purchase contract properly reflects one's concern and specific details upon which one may rely. All information in this document is provided in good faith but not binding for legal reasons.