



CUSTOM LINE

Specifications

Construction

Builder:	Custom Line
Model:	Navetta 33
Year:	2010
Hull material:	GRP
Location:	Turkey

Dimensions and Capacities

Lenght:	107.02ft
Beam:	22.47ft
Draft:	7.32ft
Displacement:	275,578Lb
Fuel tank:	3962.58 gal
Water tank:	1135.94 gal

Key features

- TRAC Fin Stabilizer under way
- Hull painting done in 2024
- Immaculate condition

Performance and Engines

Max speed:	17kn
Cruise speed:	10kn
Engines:	2 x MAN V12 1360hp
Generator:	2 x Kohler 40kW

Accomodation

Guest cabin:	5
Number of guest:	10
Crew cabin:	3
Number of crew:	5



CUSTOM LINE

2024 Refit

Exterior

Hull painting, upper hull gelcoat repairs, and polishing.
Chrome handrail extension towards the rear of the upper deck (in front of the crane).
Sikaflex sealant replacement and teak oil polishing along the edge of the main deck handrails.
All exterior upholstery fabric replaced, with Stamovit covers added.
New Fifer awnings on the sundeck and upper deck.
Fifer window renewal in the wheelhouse.
All fender covers replaced.
New upper deck table and chair set, rear seating group, and coffee table.
New seating group and coffee table on the sundeck.
Two seating groups, one round coffee table, and one large rectangular coffee table on the main deck.
Fender holders re-covered with leather.
Replacement of stair lights.
All exterior LED lighting installed.
Complete repainting and teak refit of the garage hatch.
Antenna covers painted black.
Illuminated signage added to the rear; name added to the flagstaffs.
Deck sanded and necessary repairs made.
Complete replacement of the teak piece behind the garage hatch.
Boat rods painted.
Deck faucets replaced.
Shower system extending to the platform (inside the garage) renewed.
Windlass fully serviced and polished.
Repair of the bow port cover.
Replacement of the stern station control throttle.

Interior

All parquet flooring refinished.
Carpets replaced.
Upholstery of the upper deck salon seating group replaced, and the central coffee table covered in leather.
Salon seating group replaced, and the central coffee table replaced.
Salon table and chairs replaced.
All interior curtains replaced.
All interior LED lighting installed.
All cabin bathrooms renovated.
All interior faucets replaced.
All trash bins and brushes replaced.
All bathroom, toilet, and sink marble edges cleaned and repaired.
All mattresses replaced.
All bed linens, pillows, and duvet covers replaced.
All leather areas in the wheelhouse repainted and repaired.
Kitchen countertops and sink replaced.
Stove, oven, and coffee machine replaced.
Range hood cleaned.
Air conditioning fan coils cleaned.
Mirror wall covering added to the edge of the salon table.
Wall coverings in the VIP cabin entrance replaced.
Sliding trash bin installed in place of the garbage disposal in the kitchen.
Kitchen cabinet doors painted.
Cracked leather wall coverings at the crew entrance replaced (3 pieces).
Furniture touch-up painting completed.
Faulty cabinet door stopper locks replaced.

2024 Refit

Mechanical - Electrical Works

Shaft, propeller, tiller, bearings, and line adjustments made.
Generator injectors replaced, condensers cleaned, and all periodic services completed.
Engine and transmission serviced, with condenser cleaning done.
Bilge and engine room covers painted.
Watermaker membranes replaced, high and low-pressure pump maintenance performed, and hoses replaced.
Emergency fire pump serviced and is operational.
Bow thruster hose leaking oil replaced.
Hydrofor pump maintenance performed and pressure tank replaced.
Wastewater pump maintenance performed.
Air conditioning compressors removed for pump maintenance; a drain was installed under the ceiling due to the lack of a drainage hole, and spot painting and polishing were done.
New EPIRB device purchased.
Liferaft maintenance, SART maintenance, pyrotechnic material renewal, fire extinguisher maintenance, and an additional portable CO2 unit added.
Two smoke sensors replaced.
TracVision multiswitch replaced.
Valve installation checks.
Anchor chain galvanized.
Upper deck and aft deck speaker replacement.
Yacht internet installation completed.



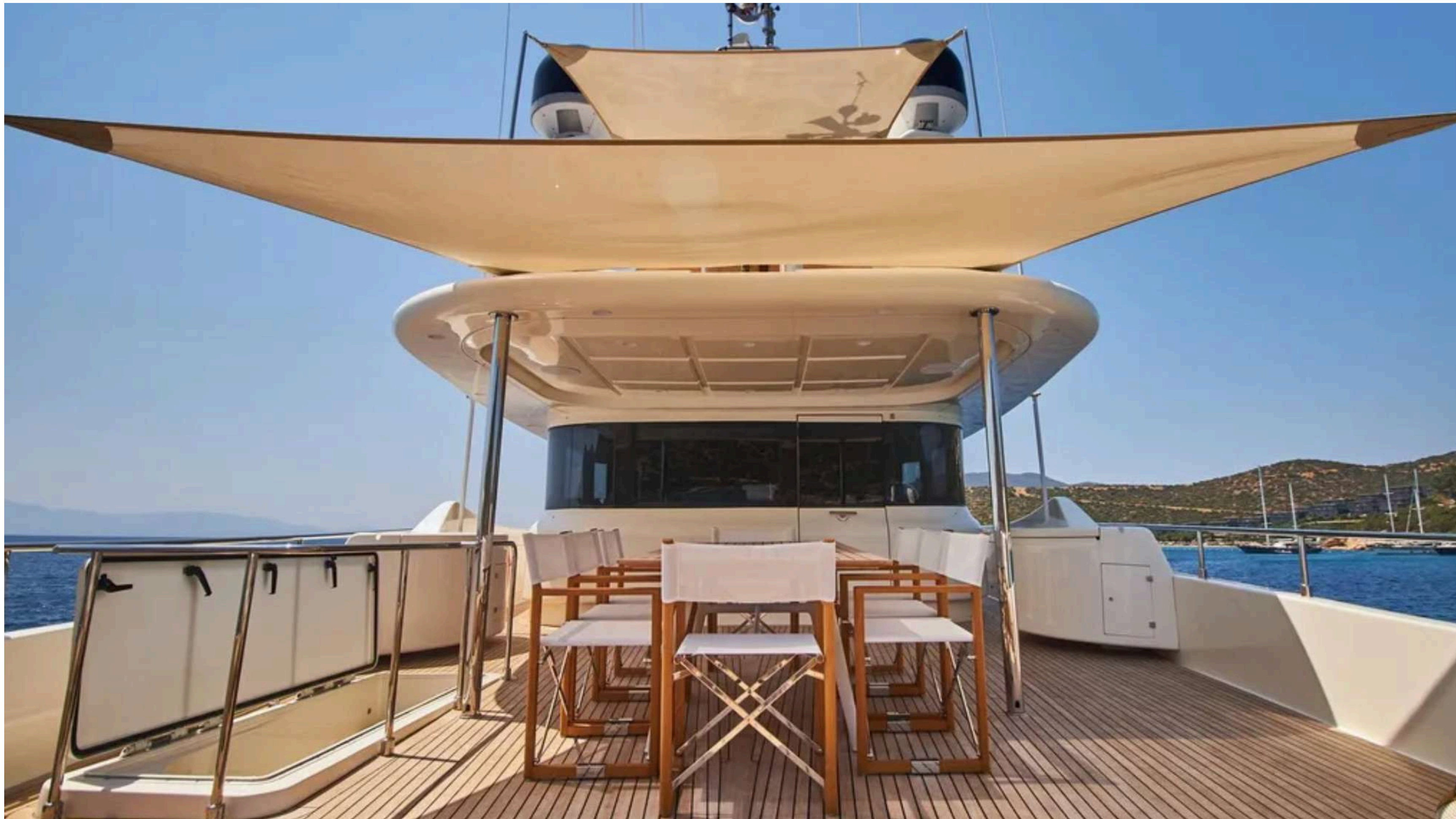
CUSTOM LINE



CUSTOM LINE



CUSTOM LINE



CUSTOM LINE



CUSTOM LINE



CUSTOM LINE



CUSTOM LINE



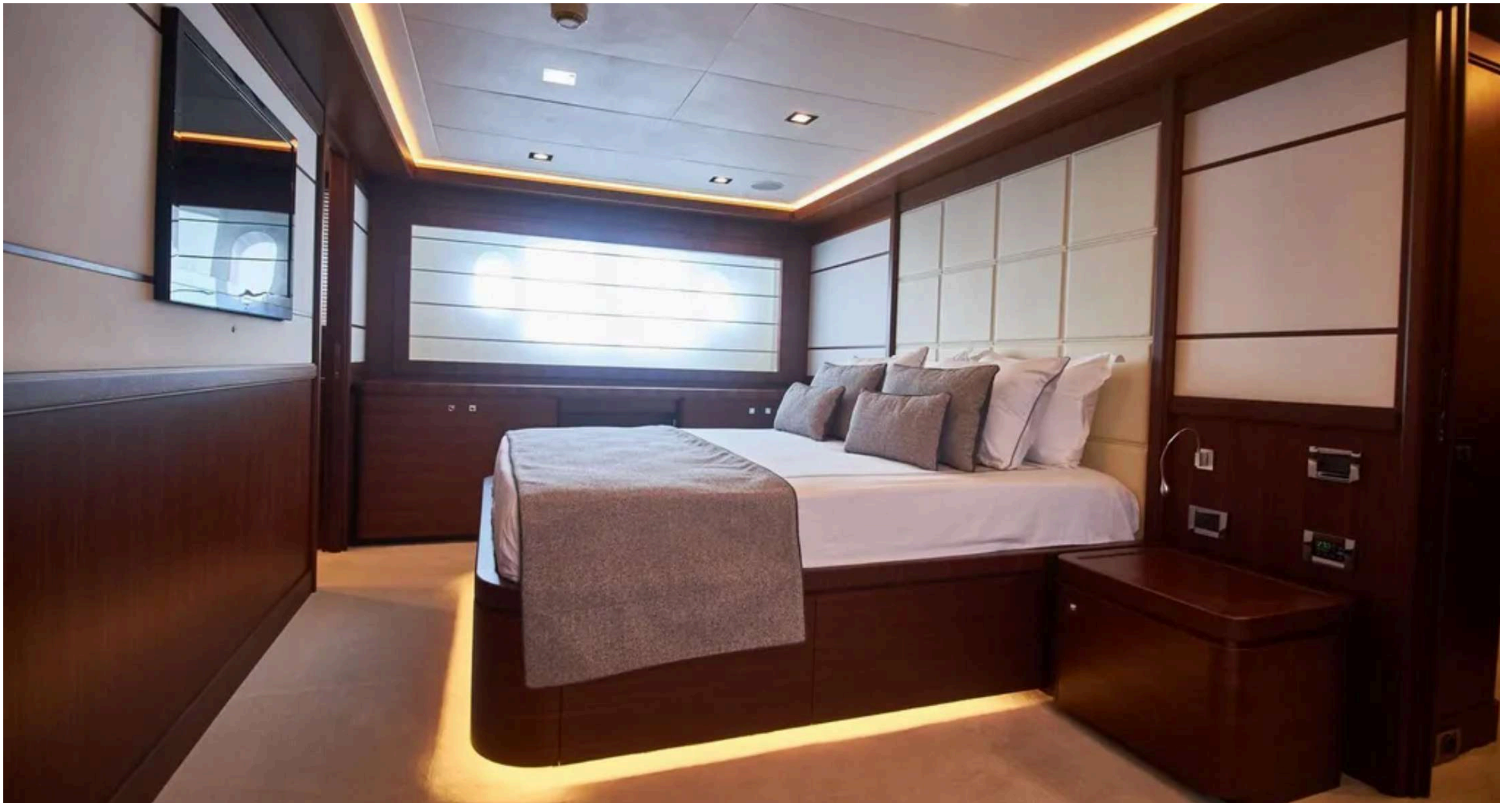
CUSTOM LINE



CUSTOM LINE



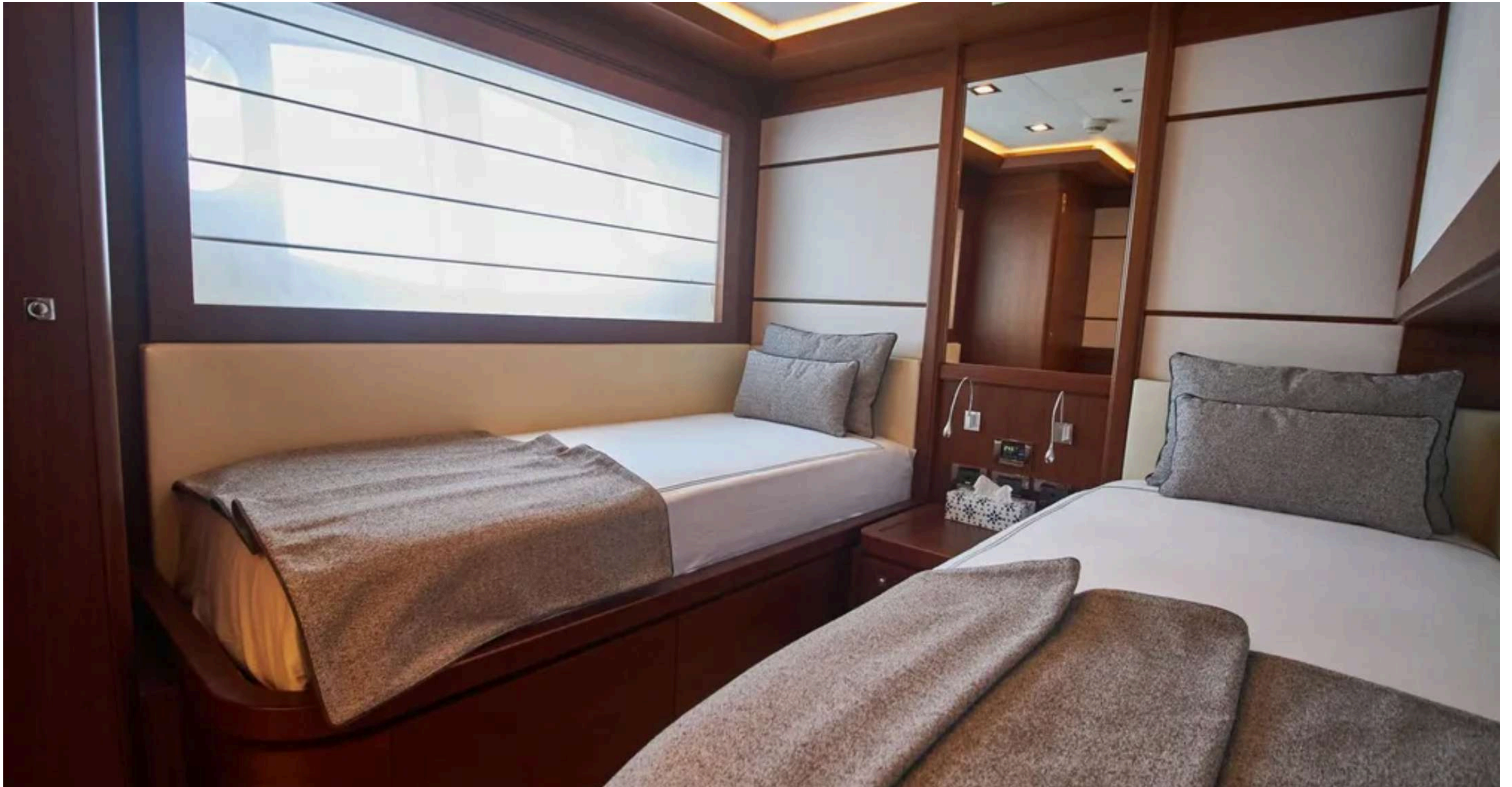
CUSTOM LINE



CUSTOM LINE



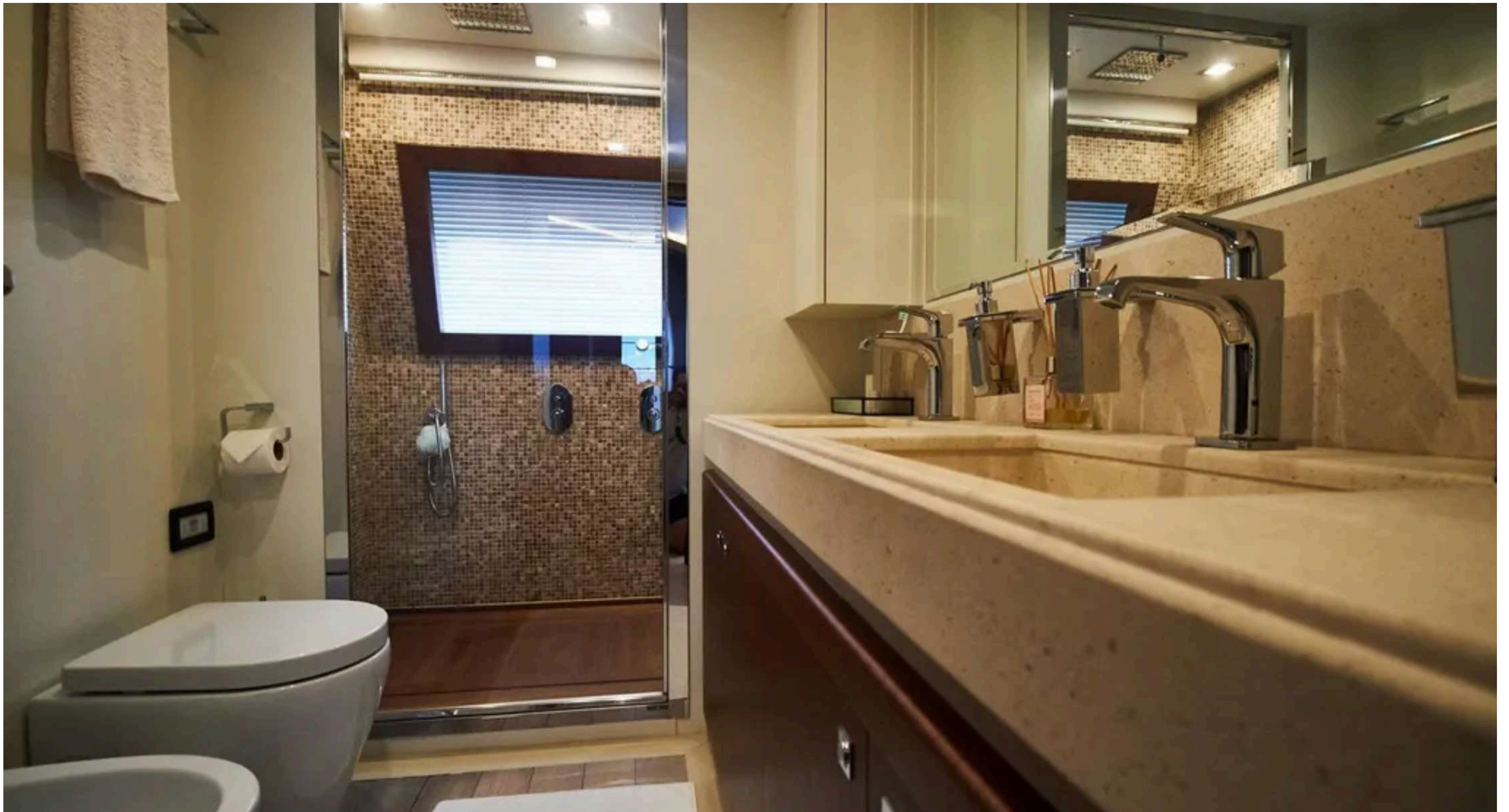
CUSTOM LINE



CUSTOM LINE



CUSTOM LINE



CUSTOM LINE



CUSTOM LINE

LEGAL DISCLAIMER

These particulars have been prepared from information provided and obtained from sources believed to be correct but are not guaranteed. This information is intended as a general guide to the vessel. We cannot, however, be liable for any inaccuracy. It is up to the purchaser to confirm details of concern to him by survey, inspection and enquiry of the seller and to ensure that the purchase contract properly reflects one's concern and specific details upon which one may rely. All information in this document is provided in good faith but not binding for legal reasons.