



Benetti

Specifications

Construction

Builder:	Benetti
Model:	Tradition 100
Year:	2007
Hull material:	GRP
Location:	Turkey

Dimensions and Capacities

Lenght:	30,2m / 100ft
Beam:	7,15m / 23.6ft
Draft:	1.8m / 5.1ft
Displacement:	152t
Fuel tank:	22.000l
Water tank:	4.500l

Key features

- Riva 5 year survey done in 2024.
- Riva annual survey done.(18.06.2025)
- Immaculate condition

Performance and Engines

Max speed:	15kn
Cruise speed:	12kn
Engines:	2 x CAT C18 1050 hp
Generator:	2 x Kohler 47 kWa

Accomodation

Guest cabin:	4
Number of guest:	8
Crew cabin:	3
Number of crew:	5



Benetti



Benetti



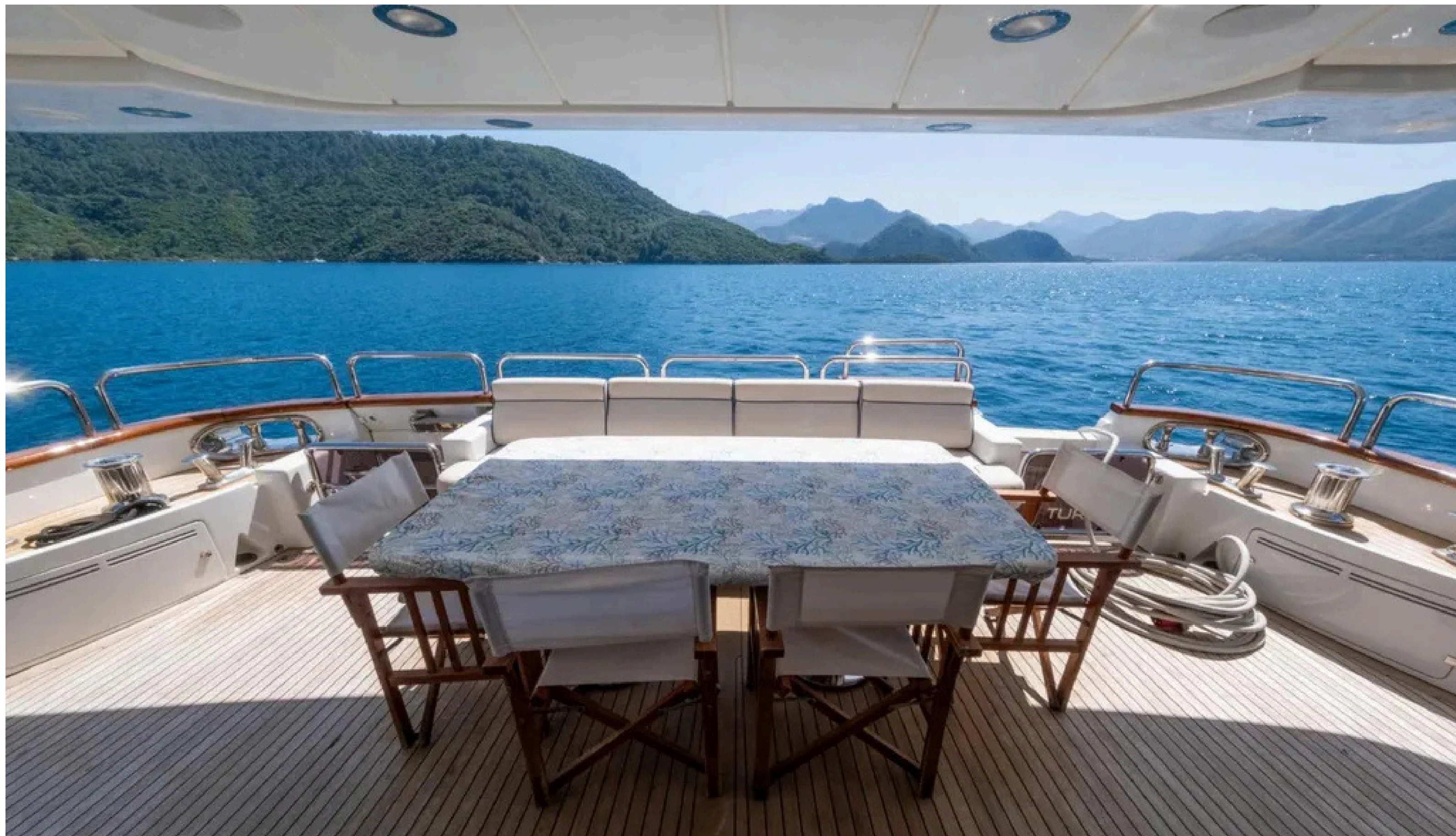
Benetti



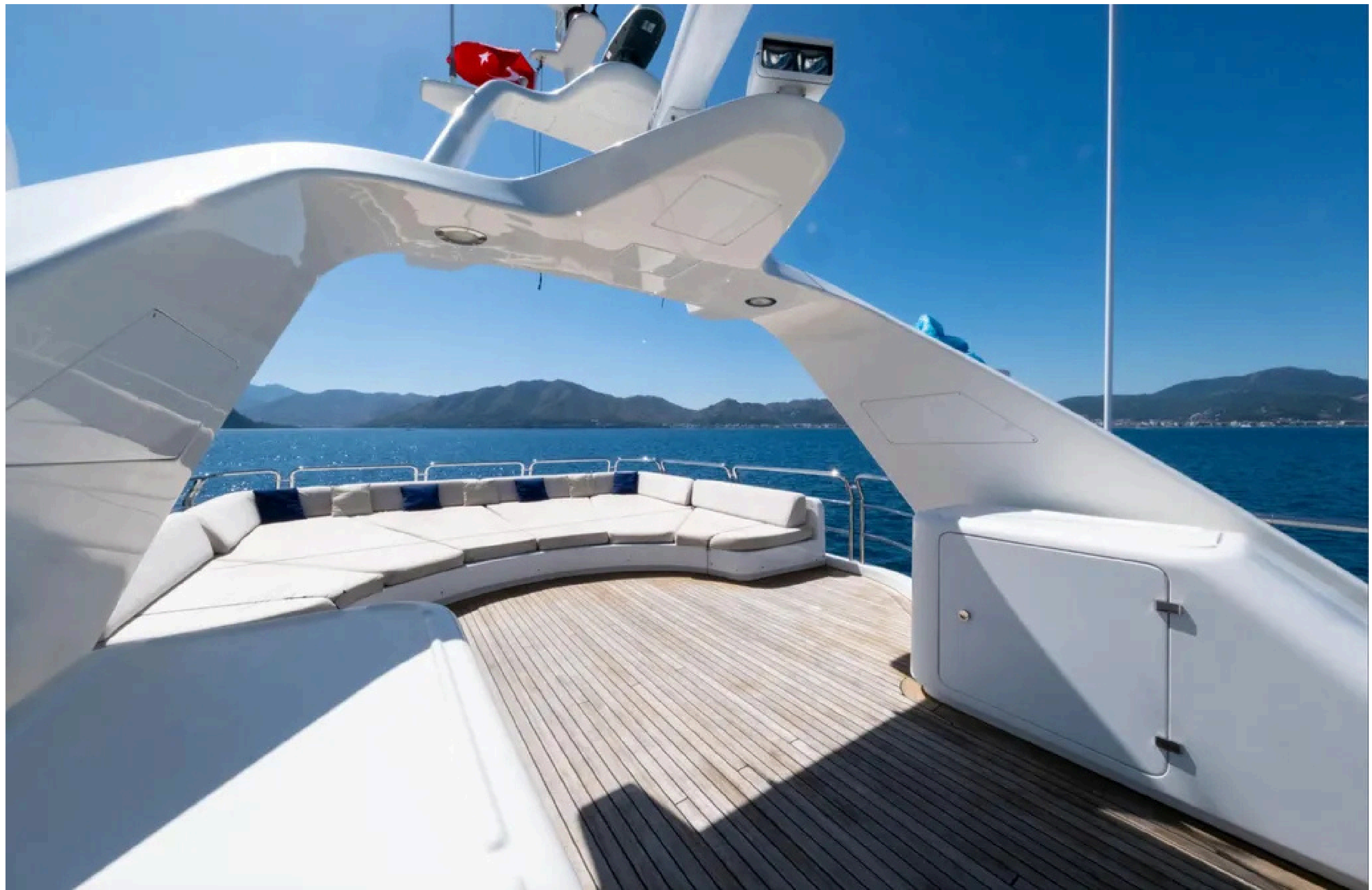
Benetti



Benetti



Benetti



Benetti



Beretti



Benetti



Benetti



Beretti



Beretti



Beretti



Beretti



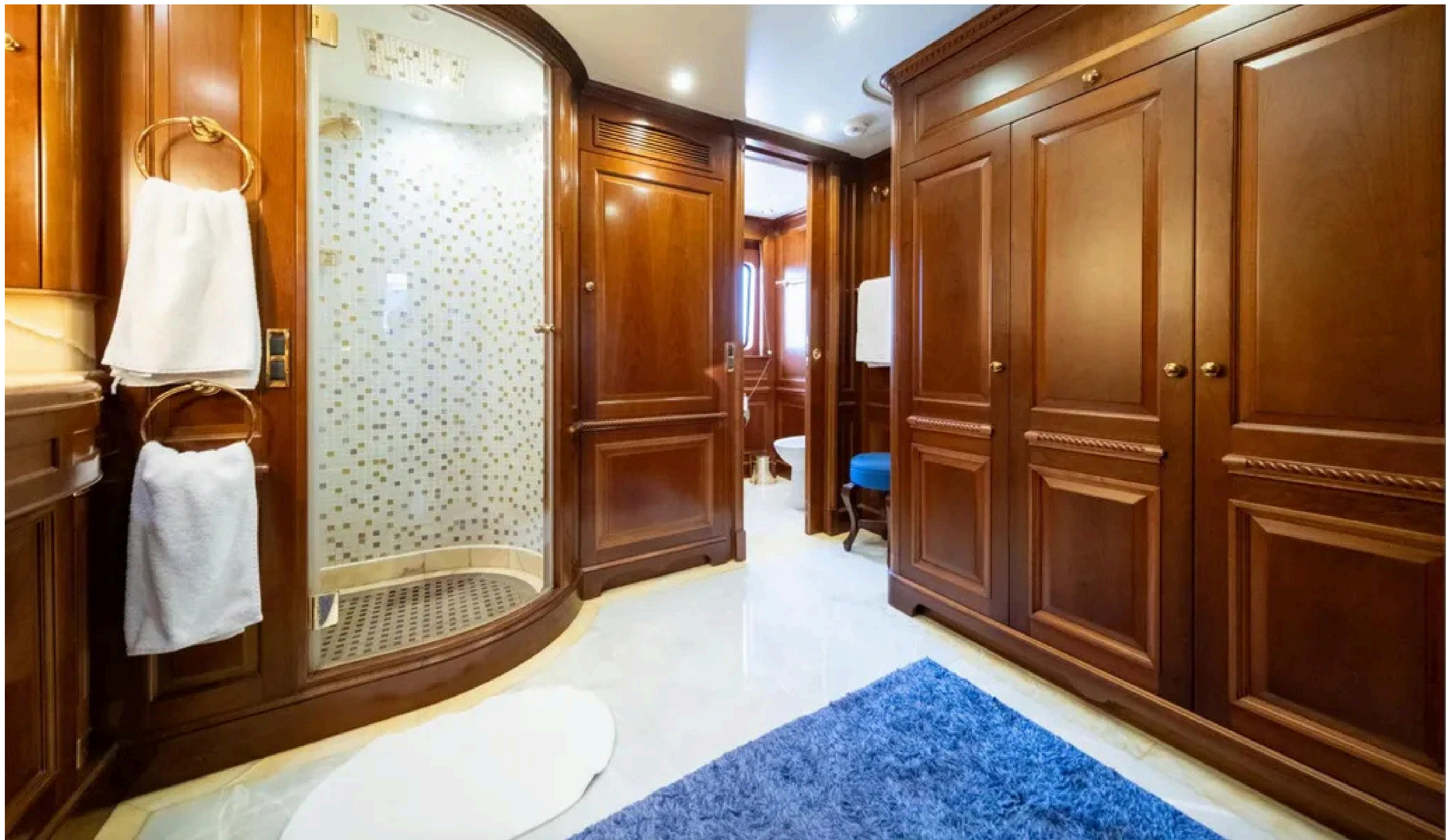
Beretti



Beretti



Beretti



Beretti



Beretti



Beretti



Beretti



Beretti



Beretti



Beretti



Beretti



Beretti



Beretti



Beretti

LEGAL DISCLAIMER

These particulars have been prepared from information provided and obtained from sources believed to be correct but are not guaranteed. This information is intended as a general guide to the vessel. We cannot, however, be liable for any inaccuracy. It is up to the purchaser to confirm details of concern to him by survey, inspection and enquiry of the seller and to ensure that the purchase contract properly reflects one's concern and specific details upon which one may rely. All information in this document is provided in good faith but not binding for legal reasons.